



Brighton Road, Aldershot

 **MARTIN & CO**

# Brighton Road, Aldershot

- Two Bedroom, Ground Floor Maisonette
- Council Tax Band: C EPC: 74/76
- Spacious Living Room
- Modern Kitchen
- Modern Bathroom
- Separate Shower Room
- Two Double Bedrooms
- Off Street Parking
- Communal Gardens
- No onward chain

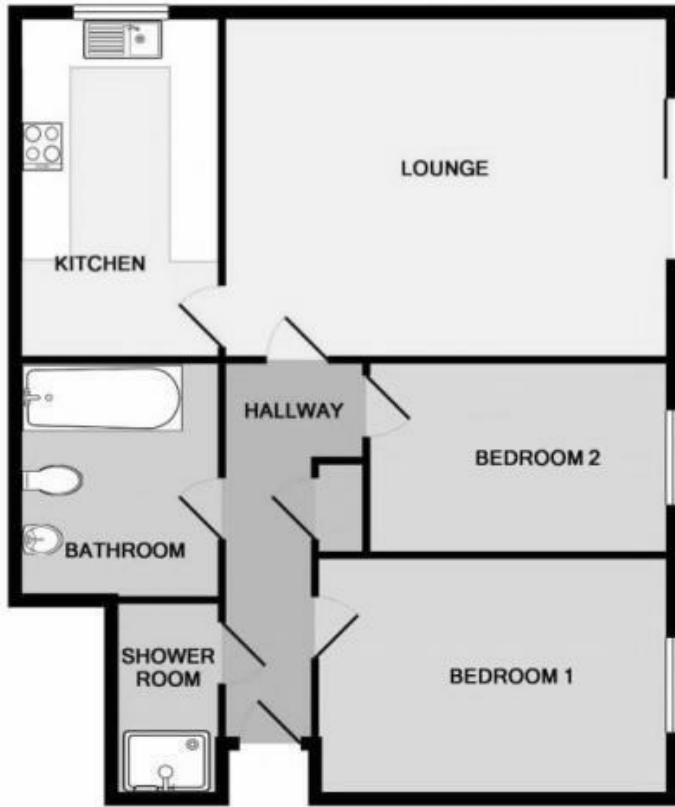
***Martin & Co are pleased to bring to the market this spacious, two bedroom, ground floor maisonette, located in Charters Court on Brighton Road. This spacious property boasts a good sized living room, modern kitchen suits, modern bathroom, separate shower room and two double bedrooms. Further benefits include off street parking, communal gardens, gas central heating and double glazing.***




Martin & Co are pleased to bring to the market this spacious, two bedroom, ground floor maisonette, located in Charters Court on Brighton Road. This spacious property boasts a good sized living room, modern kitchen suits, modern bathroom, separate shower room and two double bedrooms. Further benefits include off street parking, communal gardens, gas central heating and double glazing.


EPC C  
Lease - 96 years remaining  
Ground Rent TBC  
Service charge £660 per annum

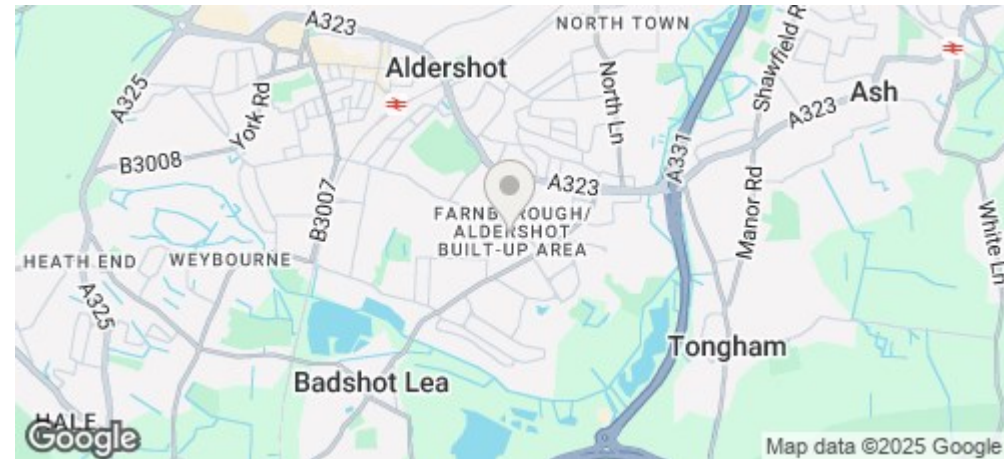




Whilst every attempt has been made to ensure the accuracy of the floor plan contained here, measurements of doors, windows, rooms and any other items are approximate and no responsibility is taken for any error, omission, or mis-statement. This plan is for illustrative purposes only and should be used as such by any prospective purchaser. The services, systems and appliances shown have not been tested and no guarantee as to their operability or efficiency can be given.  
 Made with Metropix ©2017

Energy Efficiency Rating		Current	Potential
Very energy efficient - lower running costs			
(92 plus) A			
(81-91) B			
(69-80) C		74	76
(55-68) D			
(39-54) E			
(21-38) F			
(1-20) G			
Not energy efficient - higher running costs			
England & Wales		EU Directive 2002/91/EC 	

Environmental Impact (CO <sub>2</sub> ) Rating		Current	Potential
Very environmentally friendly - lower CO <sub>2</sub> emissions			
(92 plus) A			
(81-91) B			
(69-80) C		77	78
(55-68) D			
(39-54) E			
(21-38) F			
(1-20) G			
Not environmentally friendly - higher CO <sub>2</sub> emissions			
England & Wales		EU Directive 2002/91/EC 	



**Martin & Co Aldershot**  
 173 Victoria Road, Aldershot, Hampshire,  
 GU11 1JU  
 Aldershot@martinco.com

**01252 311974**  
<http://www.martinco.com>



**Accuracy:** References to the Tenure of a Property are based on information supplied by the Seller. The Agent has not had sight of the title documents. A Buyer is advised to obtain verification from their Solicitor. Items shown in photographs including but not limited to carpets, fixtures and fittings are not included unless specifically mentioned within the sales particulars. They may however be available by separate negotiation. Buyers must check the availability of any property and make an appointment to view before embarking on any journey to see a property. No person in the employment of the agent has any authority to make any representation about the property, and accordingly any information given is entirely without responsibility on the part of the agents, sellers(s) or lessors(s). Any property particulars are not an offer or contract, nor form part of one. **Sonic / Laser Tape:** Measurements taken using a sonic / laser tape measure may be subject to a small margin of error. **All Measurements:** All Measurements are Approximate. **Services Not tested:** The Agent has not tested any apparatus, equipment, Fixtures and Fittings or services and so cannot verify that they are in working order or fit for the purpose. A Buyer is advised to obtain verification from their Solicitor or Surveyor.

